

# Lean R&D Real-Time Collaboration Platform

## ClearWorks

---

### Enterprise Edition E-Mail Server System

### Concise Configuration Manual

**Description:** Microsoft Mail Server (POP3, SMTP) is the “Lean R & D Real-time Collaboration Platform ClearWorks” Built-in support for e-mail management system for the requirement of a variety of e-mail management platforms, but the server software itself is not part of the All-in-one run-time package, but is the additional components of Microsoft Windows operating system. This manual provides e-mail server configuration management information of using these Windows components with the Lean R & D platform.

### Manual Content

- \* Install the Prerequisite
- \* Install the Mail Server (POP3, SMTP)
- \* Start the Mail Server (POP3, SMTP)
- \* Add a Mail Domain and Mail Account
- \* Set up E-Mail Account Password
- \* Test
- \* ClearWorks related E-Mail Configuration

---

Last revision date: January 26, 2008

# 1, Install the Prerequisite

This configuration uses Windows Server 2003 operating system version, this guide also applies to other systems such as Windows Server 2008 and other Windows server system version.

## 2, Install the Mail Server (POP3, SMTP)

Control Panel - "Administrative Tools -" Configure Your Server Wizard  
Either

Start "All Programs " "Administrative Tools" "Manage Your Server " "Add or remove roles" "The next step -" insert the Windows Server 2003 or Windows Server 2008 installation disc "Select server role as" mail server (POP3, SMTP) ",

Add

As shown below:



## 3, Start the Mail Server (POP3, SMTP)

Through the second step after installation in the system "services" which need to ensure that the three "services" is running.

### 1, IIS Admin Service

File C: \ WINDOWS \ system32 \ inetrv \ inetinfo.exe

POP3, SMTP needs to support this service.

### 2, Microsoft POP3 Service

E-mail retrieval service

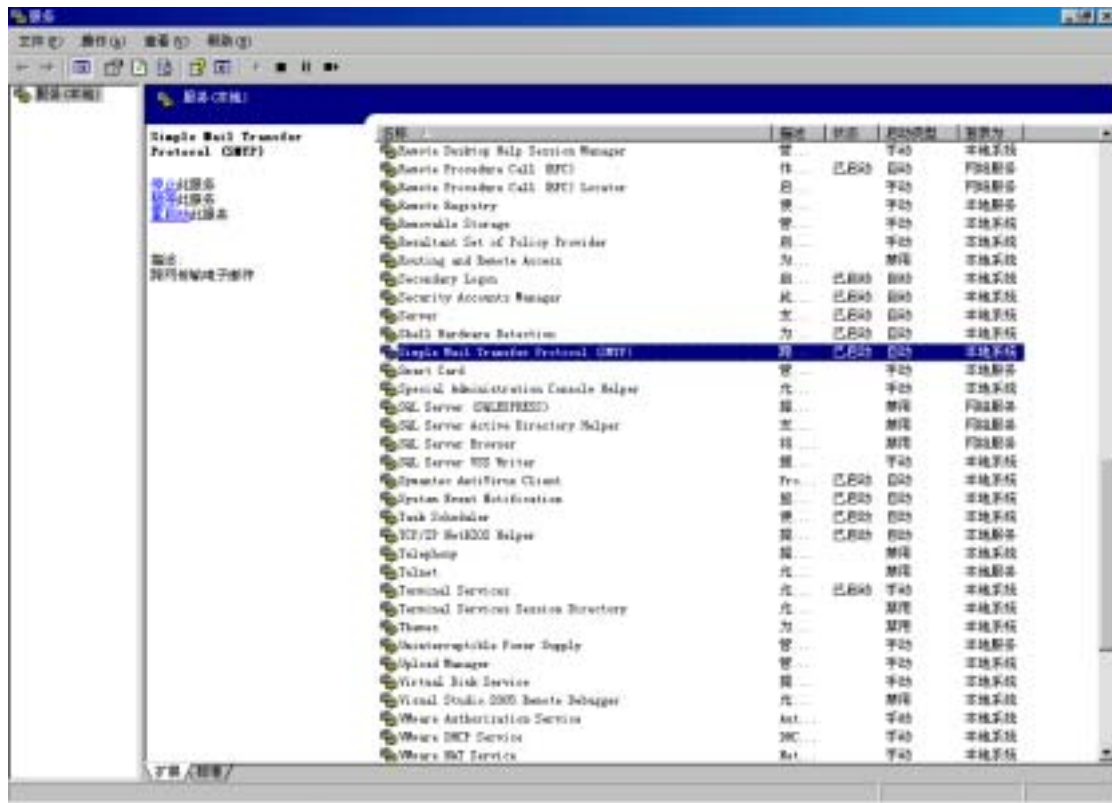
File C: \ WINDOWS \ system32 \ POP3Server \ pop3svc.exe

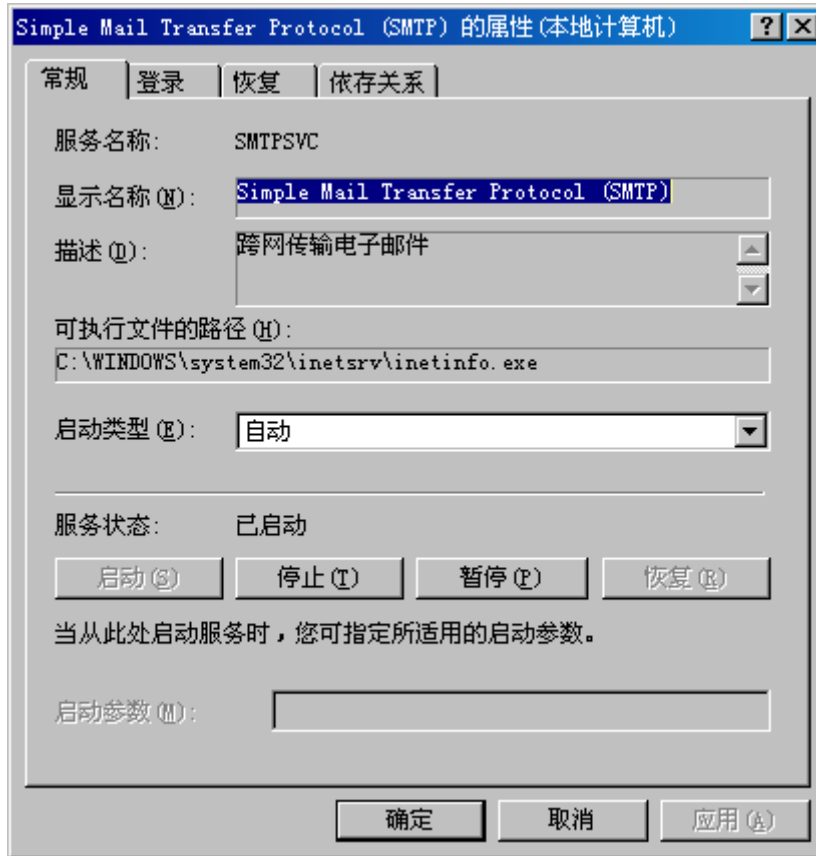
### 3, Simple Mail Transfer Protocol (SMTP)

Inter-network transfer e-mail

File C: \ WINDOWS \ system32 \ inetrv \ inetinfo.exe

Control Panel "Management Tools " Service "Double-click the service name " if the "Service status" to "stop", click "Start" will "service" up and running. As shown below.



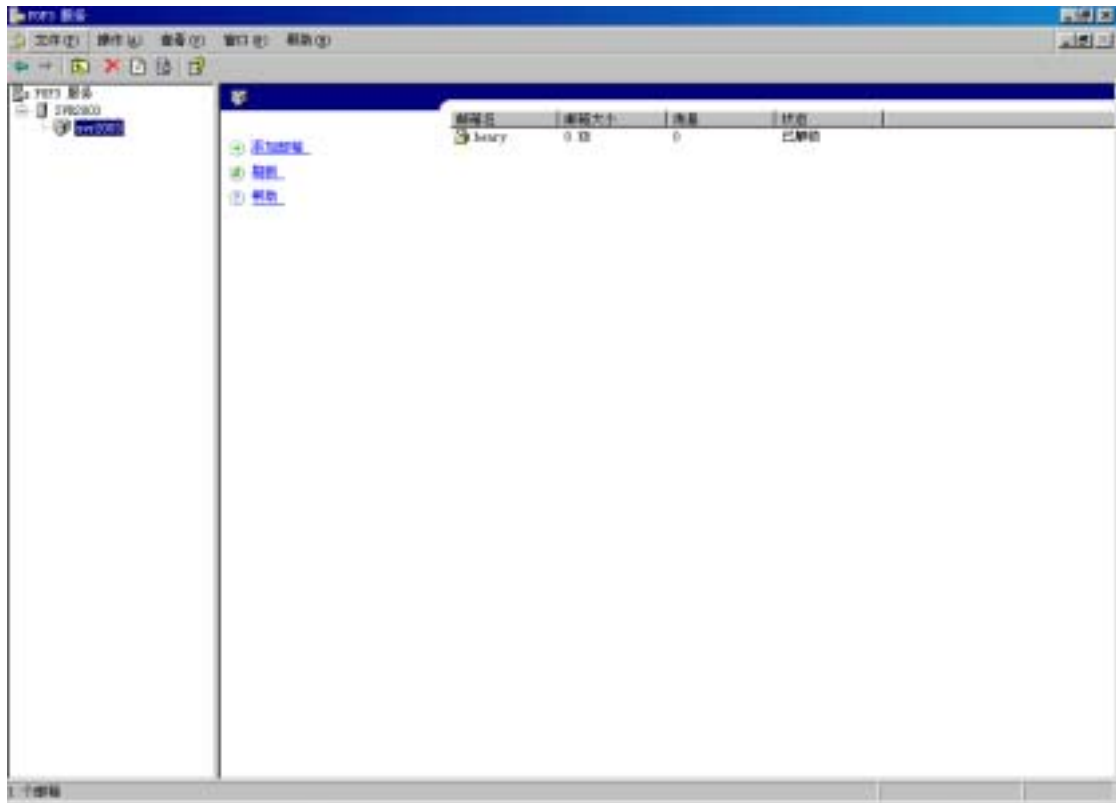


4, if the HTTP SSL (services are provided through Secure Sockets Layer) status as a startup, you may need to be "automatic" to "Manual" and stop its operation because its operation will occupy the 80-port, and the apache server port conflicts arise.

File Name: C:\WINDOWS\system32\lsass.exe

## 4, Add the E-Mail Domain and Mail Account

Start the POP3 service, add the domain and e-mail accounts, as shown below,



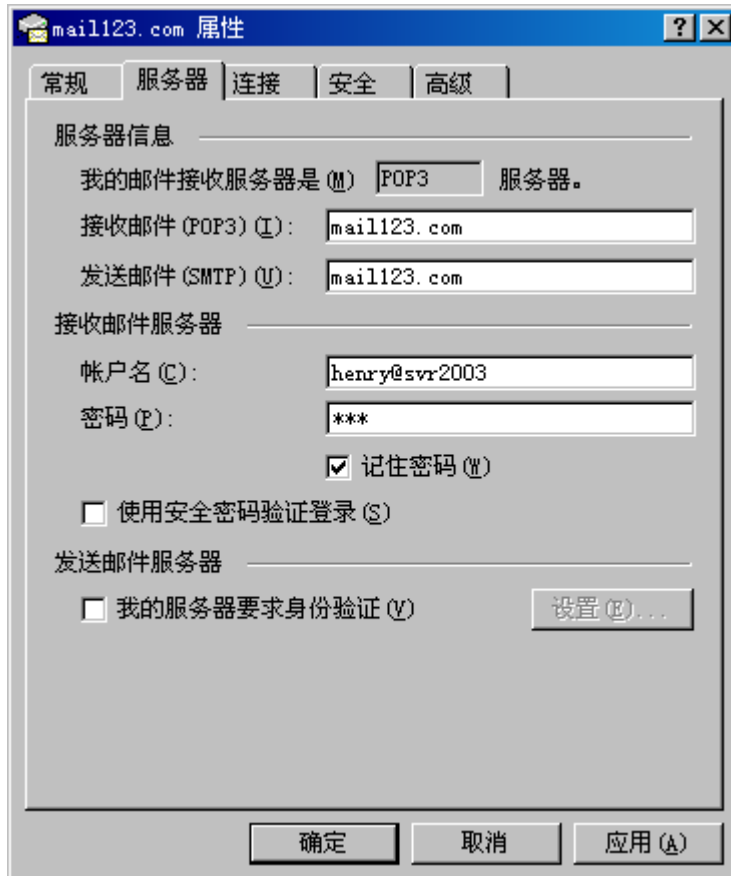
## 5, Set up E-mail Account Password

Start a command line, enter:

```
winpop changepwd henry@mail123.com 123
```

## 6, Execute a Test

1, start Outlook, set up your account and password, and server name,



Send and receive a test message to see success.

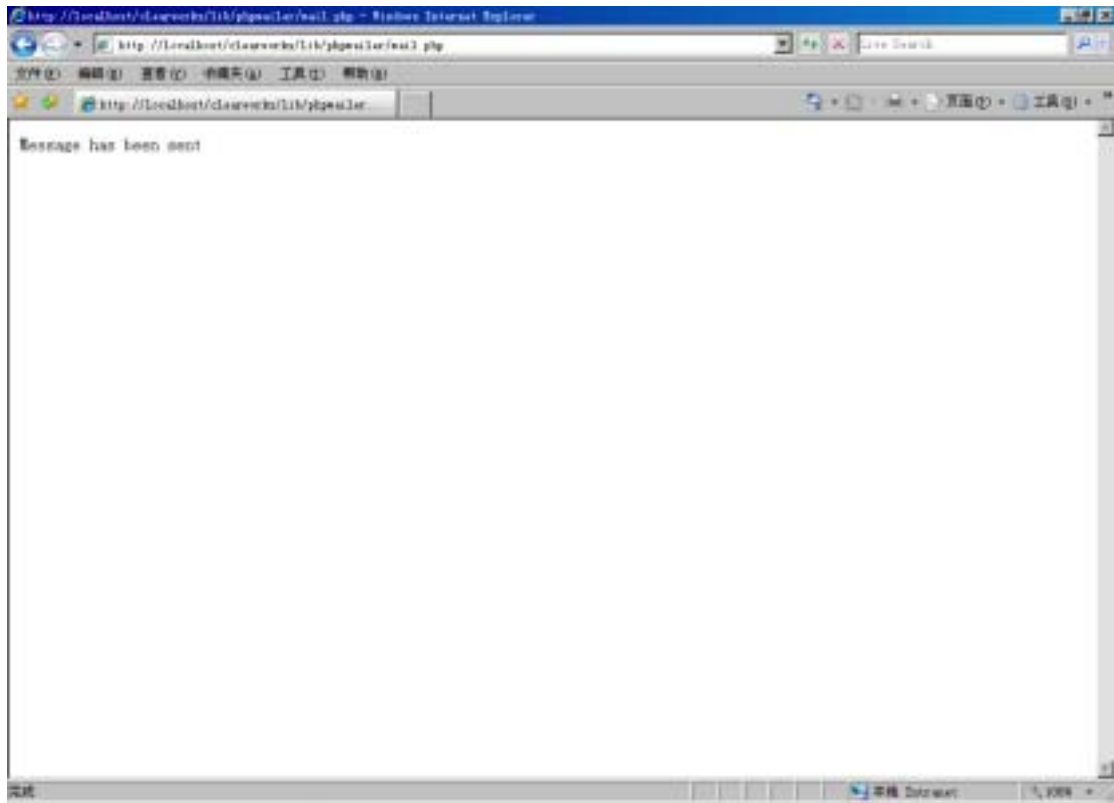
2, modify the D:\sevensoft\clearworks\lib\phpmailer\mail.php

```
$ mail-> Host = "mail123.com"; // specify main and backup server
$ mail-> Username = "henry"; // SMTP username
$ mail-> Password = "123"; // SMTP password
$ mail-> AddAddress ( "henry@mail123.com", "Henry Yu");
```

In the browser address enter:

<http://localhost/clearworks/lib/phpmailer/mail.php>

If there is: "Message has been sent", Said the not success of PHP send and receive e-mail configuration.



## 7, ClearWorks Related E-Mail Configuration

After the above configuration, which can be Windows mail server and ClearWorks Lean R & D platform used in conjunction with:

- 1, Using the Web mail module of ClearWorks transceivers and management of project-related e-mail requests of clients.
- 2, Requirement management, requirement change notifications sending.
- 3, Bug monitoring, the status changes to send e-mail notification to the appropriate person responsible.
- 4, Tasks allocation and changes send e-mail notification.
- 5, New conferences, events, etc. to send mail notification.
- 6, Code submission and Review notice.
- 7, Software release notice.

Please refer to "the ClearWorks user manual." for some specific configurations.