

Lean R&D Real-Time Collaboration Platform

ClearWorks

Enterprise Edition Requirements Management Tool

Concise Install Manual

Declare:

All content of the document in this manual is only used for [ClearWorks Word Plug-in] install to provide information; its contents are subject to change without notice. Sevenuc Software Co., Ltd. time in the preparation of the manual has done its best to ensure its content is accurate and reliable does not exist for them or because of missing or improper use of the information in this manual is responsible for the consequences. Please carefully read the entire contents of the manual, and follow the instructions to use.

Have not been Sevenuc Software Co., Ltd., granted permission, no person or organization shall on any part of this manual copying, misappropriation or dissemination.

Content:

- * Install the software components
- * Configure the server IP address and the database user
- * Configuration Word template
- * Manual Installation

Last Revision Date: January 26, 2008

1, Uncompress Plug-in Package

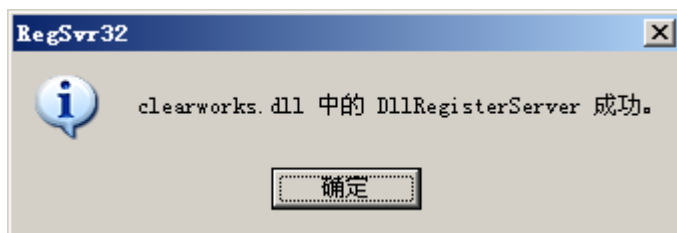
A first step, unzip Sevenuc.rar, and will copy the entire directory to C: \ Program Files directory, the formation of C: \ Program Files \ Sevenuc directory.

2, Register Run-time DLLs

The second step, the compressed package clearworks.dll and odbclib.dll two files copied to the system directory, usually C: \ WINNT \ system32 or to C: \ WINDOWS \ system32, depending on the operating system version and installation directory may be.

3, Set User Access Rights for New Project

The third step, the registered components: Start => "Run ", Enter "regsvr32 clearworks.dll" System in the following diagram, then the registration was successful.



(Figure 1)

4, Import the Project Initial Code

Configure the server IP address and the database user

Locate C: \ Program Files \ Sevenuc \ ClearWorks \ clear.ini, edit the settings inside,

The contents of the configuration file as follows:

[server]

ip = 192.168.2.160 (the server's IP address)

[database]

user = clearuser (server, database, remote user name, default clearuser, If in doubt please contact the database administrator)

password = 123456 (database, a remote user's password, default 123456)

[email]

addr = henry@sevenuc.com (demand for e-mail notification of updates needs of the user e-mail address, optional)

user = henry (e-mail user name)

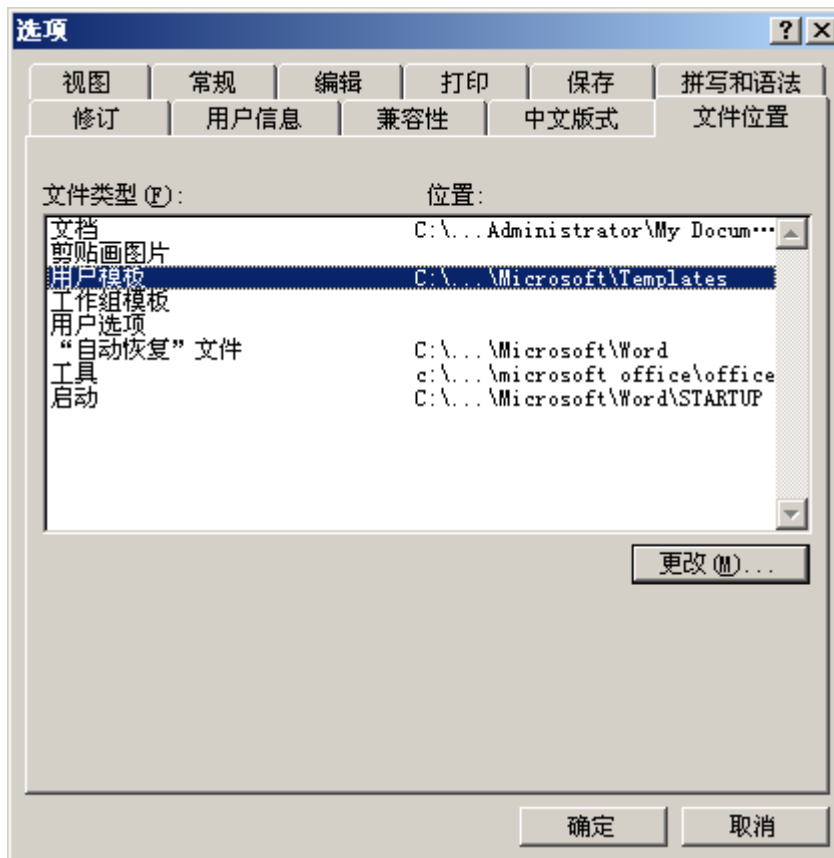
password = 123456 (e-mail user password)

5, Configuration Word template

Open Word, Tools => "Options " File Location" =>. "User Template " change (see below), copy the directory location (using Ctrl + C) on my machine the location as follows:

C:\Documents and Settings\Administrator\Application Data\Microsoft\Templates

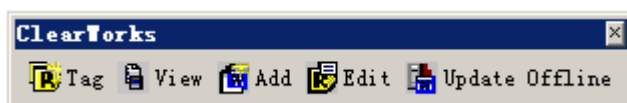
And then paste (using Ctrl + V) into the Explorer address bar, our coverage of the original Normal.dot file Normal.dot.



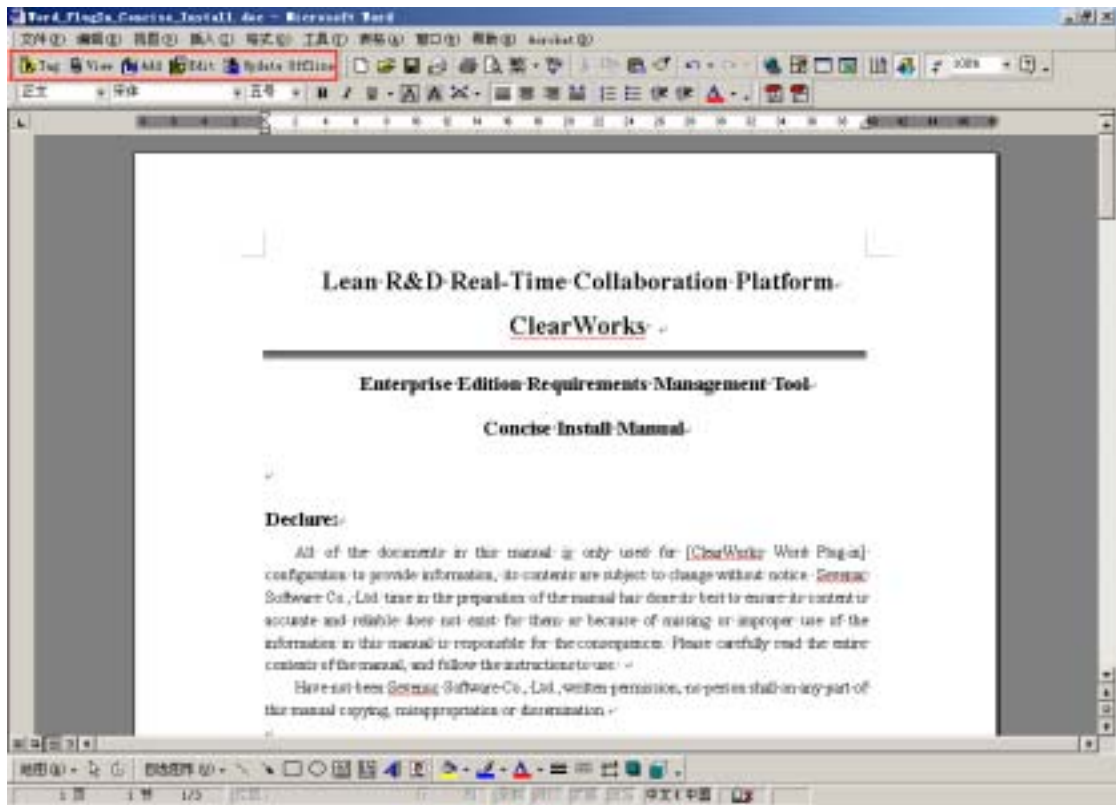
(Figure 2)

6, Copy the Server-side Hook Files

Open the Word, see if there is a toolbar as shown in Figure 3, try to log on the server.



After installation is complete, open the Word, if there is shown under the toolbar, then the installation was successful.



(Figure 3)