

Lean R&D Real-Time Collaboration Platform

ClearWorks

Enterprise Edition Word Plug-in

Concise User Manual

Description: ClearWorks Microsoft Word Plug-in requirements management tools is “Lean R & D Real-time Collaboration Platform ClearWorks” supporting software, which are used to extract and manage client requirements in the Word documents.

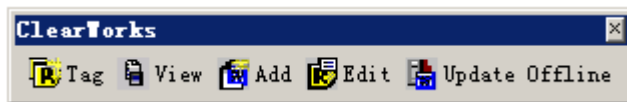
Content:

- * Calibration requirements
- * Sign-on system
- * View and update the requirements within the document
- * Modify the requirement for property
- * Increased requirement for the new version:
- * Lock and unlock:
- * View History
- * E-mail notification
- * Update changes Offline

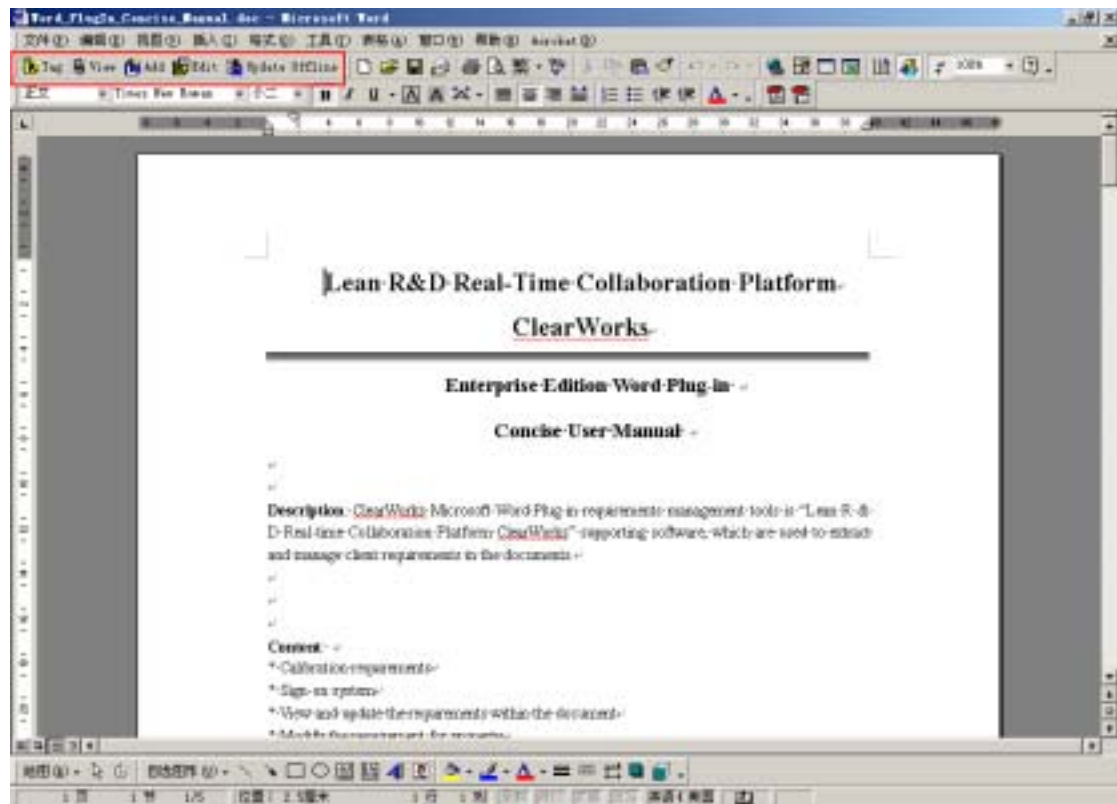
1, Calibration Requirement

1, Mark Requirements:

The election on the requirement for calibration of the requirements of content, click the "mark" button, then the requirement appears as shown in red tags; **NEW: 00001** that number is the identify the new requirement, "" for the requirements of the end of the symbol. The following requirements set by the contents of the icon as follows: "Achieving the system software, hardware and software platform independence, support for major operating systems and hardware platforms including: UNIX, Linux, and Windows; in hardware platforms and operating systems change, no additional development costs, Just re-installation and deployment; support for heterogeneous hardware platforms and heterogeneous operating system integration and operation; support for different database systems, such as Oracle, MS SQL and Sybase ".



Toolbar "tag" icon



(Figure 1)

2, Calibration Requirements can be in the Off-line mode.

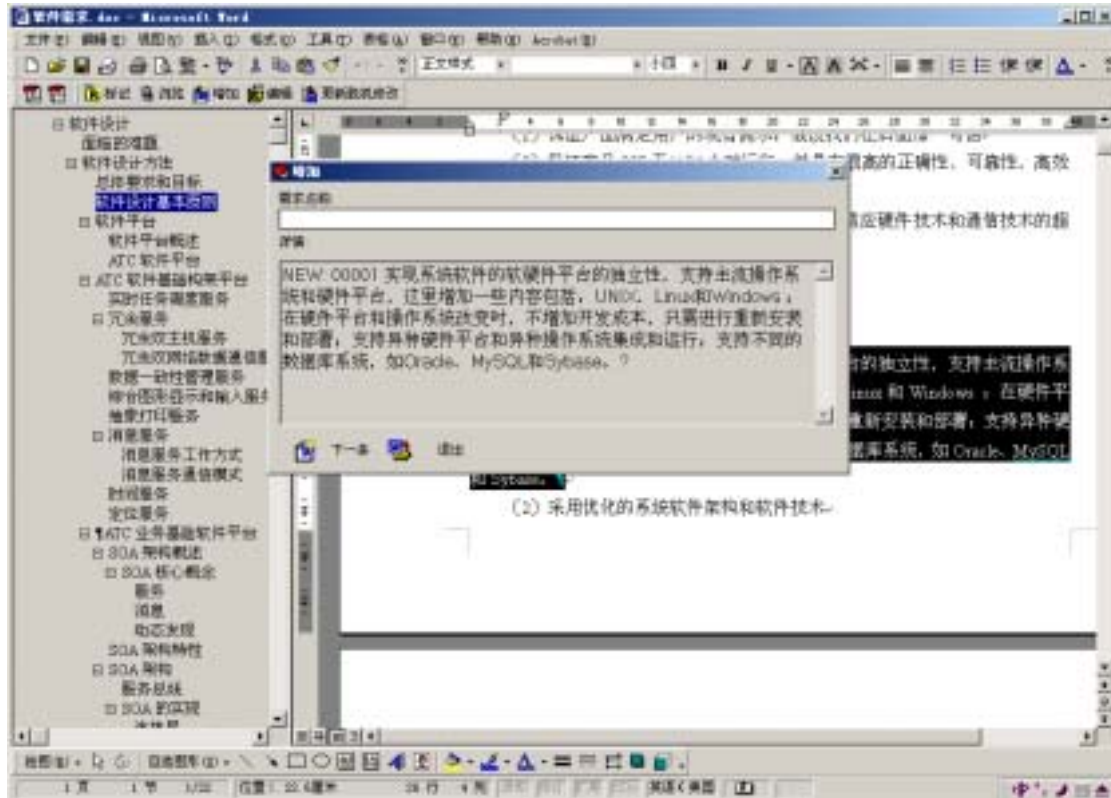
3, A number of requirements can be calibrated.

4, After the requirements of calibration can be carried out offline browsing.

Click the "Browse", the system will automatically move documents to the appropriate location of the requirement, and elected to the requirement for content, to facilitate change, edit the following diagram of black Some shall be automatically selected for the needs of specific content. Click "Next", you can move to the next requirement calibration entries.

The second part of the log

1, **Operation:** an increase in clicks, edit, modify or update offline three buttons, if not at this time and the server online, the system required to log on, enter the user name and password, where username is ClearWorks system user name, and in view the same input.



(Figure 2)

Login is successful, need to select the requirement-owned projects, as shown below:



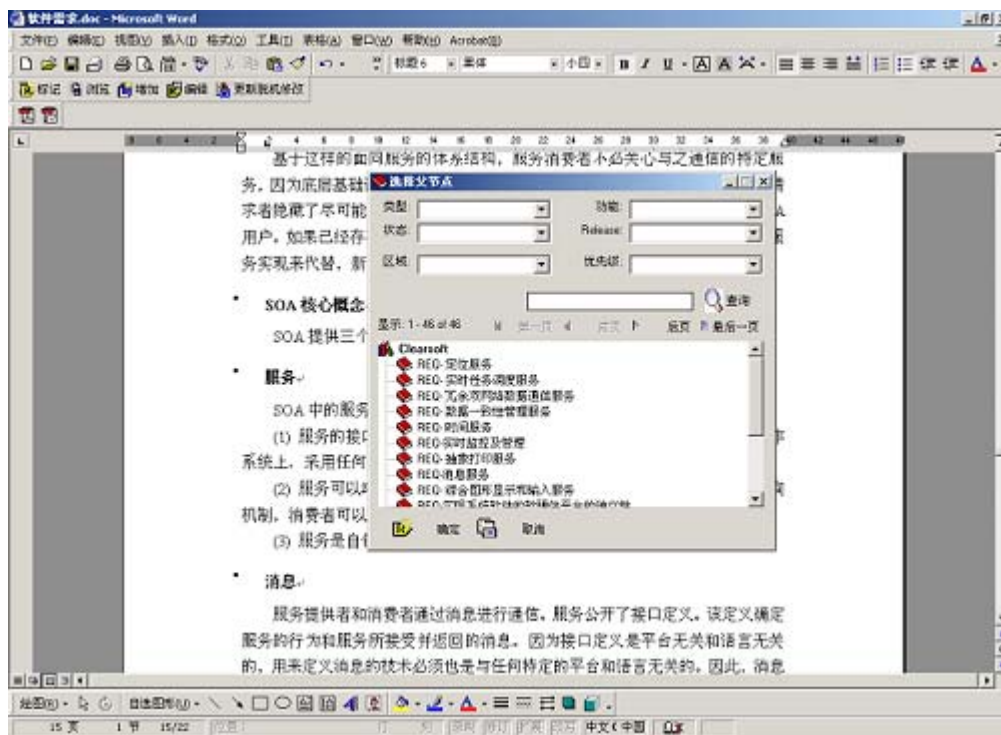
(Figure 3)

Select a project, click "OK" to exit. At this time and the server database system has been on-line, can be increased requirement, update and delete, lock and other operations of the.

The third part of the increased requirement

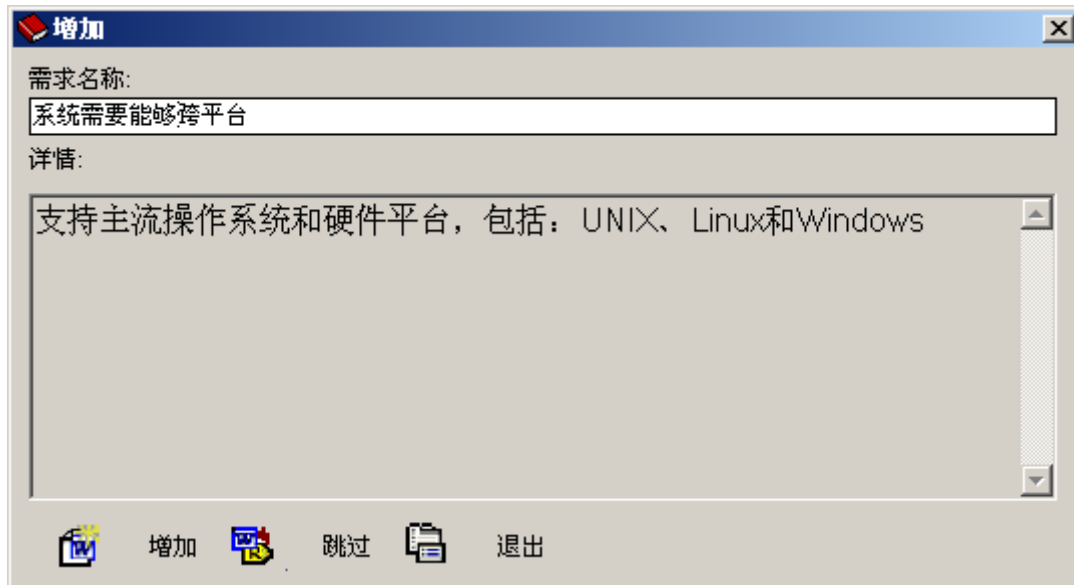
When the content needs as the requirement for good after the selection (see first part of the calibration of requirement), at an appropriate time by adding these entries can be a remote server database.

Operation: Click "Add" button, there are tree-like structure of the requirement for the dialog box used to select the requirement -owned parent needs:



(Figure 4)

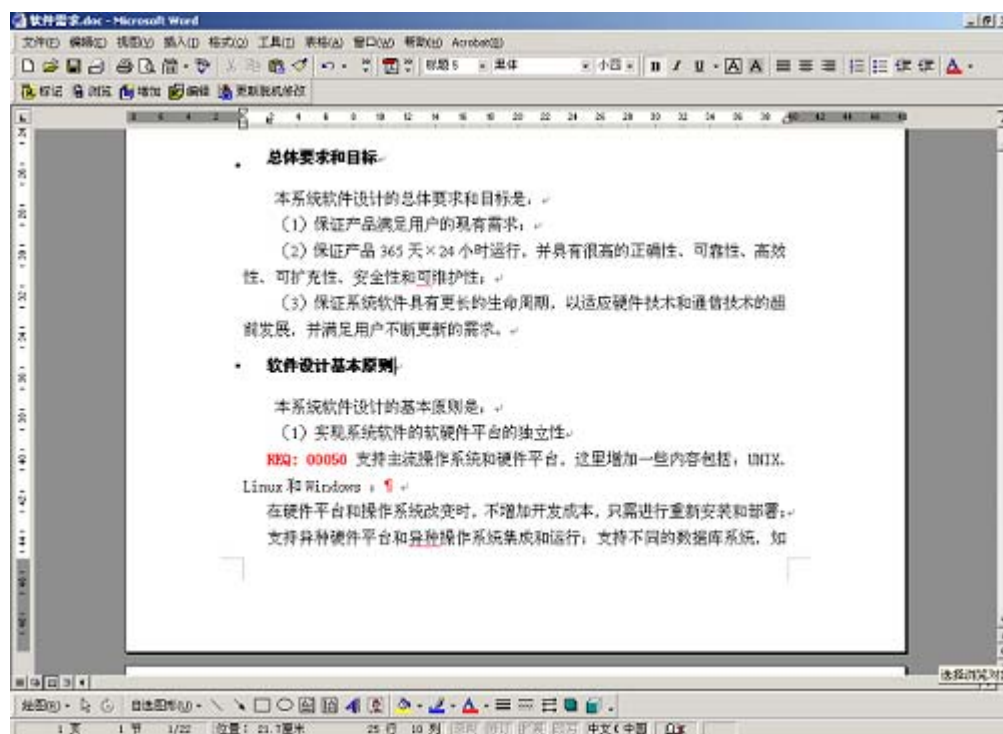
Select the requirement needs of dependent parent, you can find around the next page and query filters. If you do not need or no parent, then arbitrarily choose one, you can usually choose ClearWorks root, because the increase in demand can also be via the browser again to modify its subordinate parent needs, specific methods to refer to ClearWorks user's manual.



(Figure 5)

After selecting the parent requirement, as shown in Figure 5, the dialog box, enter the requirement for name, click on "Add" button, you can join the server database to which the demand. Click "Skip" is ignored which needs.

Tip: Enter the name of the requirement can be "copied" part of the details of the contents of the requirement, and then "Paste" to the name of the part which can save typing time.



(Figure 6)

After the success of requirement for inputs, as shown in Figure 6, needs the label from the "NEW: 00002" into a "REQ: 00050". It should be clear is that, "00002" number is the additional requirement within the document numbers, "NEW" that has not joined the database, and "00050" number is the demand for "Database ID" is a database for the needs of as shown. After the demand

to join the database, usually go through several revisions, the final will be finalized; the requirement for content updates can refer to later in the third section describes the approach. In order to demand more "conspicuous" category logo, you can label the first demand "REQ" was revised to more specific needs of some type, such as the "FUNC" (that functional requirements), of course, may not make any changes. However, paying particular attention to: If you want to modify the label format of the first list must meet the following format, and the demand for "Database ID" can not be changed, the entire label font to be red and bold.

Label format: "label head "+" ":"+ space +" Database ID "+ Space

Modify the requirement for the label at the same time of course, can also modify the requirement for content, logo and content changes when the requirement for good later, the server can ClearWorks case of networking, you can modify the contents of the update to the server database, the system provides two kinds of update methods:

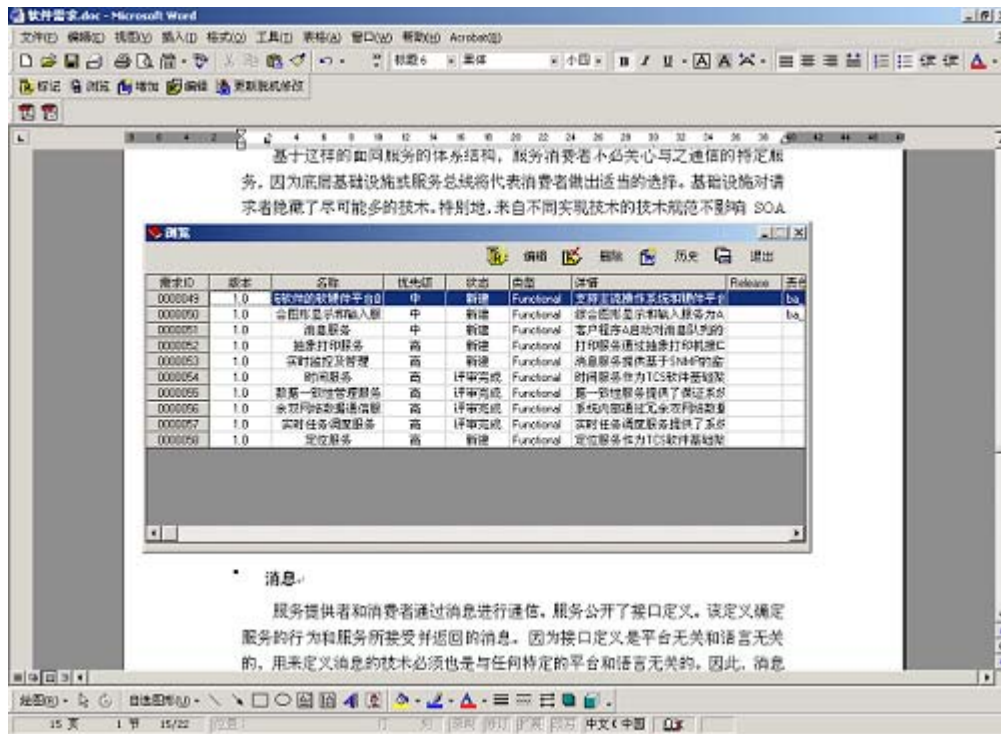
The first: Click on "Update offline modify" button, the system will all the needs within this document (including the tags and content) batch updates to the server database.

Second: Click the "View" button, and then revised and updated for individual needs, please refer to Part III.

3 View and Update the Requirements within the Document

1, Modify the content requirements and attributes:

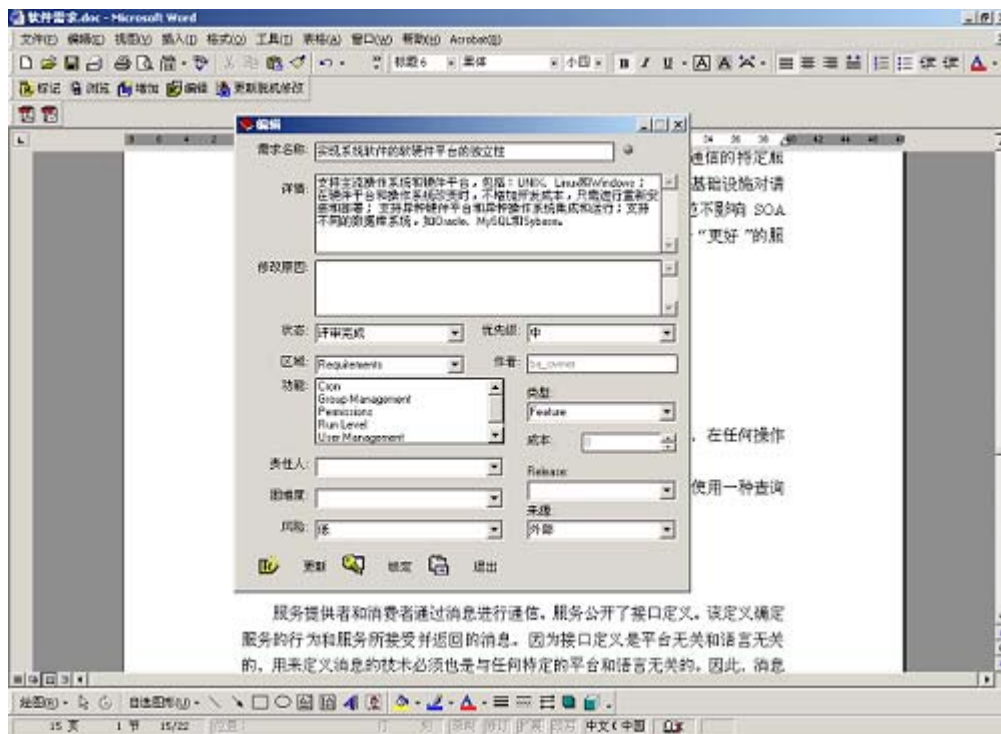
Operation: Click "View" button, then the system lists all the requirements of this document, as shown in Figure 7:



(Figure 7)

Then you can update the individual needs, lock / unlock, delete, view the history of such an operation.

Click the "Edit" button on the needs of the individual selected for editing, the system will appear as shown in Figure 8 property box:



(Figure 8)

The following are the system requirements for your project (Requirement) defined list of attributes:

- * **Requirement -name** - a brief description of the requirement.
- * **Details** - a detailed description of the requirement.
- * **Modify reasons** - the reasons for change described.
- * **Status** - whether demand has been approved, or has been incorporated into the project had.
- * **Priority** - high, medium or low.
- * **Release** - belongs to iterative version.
- * **Regional** - demand for their respective category.
- * **Function** - the effectiveness of classification requirements.
- * **Type** - the type requirements (availability, performance, etc.).
- * **Cost** - the estimated cost of achieving the requirements.
- * **Difficulty** - a difficult practice to complete the needs of the rough guide.
- * **Risk** - the risk of the implementation of project-related guide. For example, if the needs of other parts of the system need to change, then there may be a high risk (and thus lower the stability).
- * **Source** - a source of demand, internal, external and so on.
- * **Creator** - the founder of the requirement.
- * **Responsible person** - who is in charge of the requirements specified.
- * **Last Updated** - last updated.
- * **Last updated by** - who was identified last updated.

These properties can also be modified through the Web browser.

2, Add Requirement for the New Version:

With one, modify the requirement for property operations, as shown in Figure 8, the needs of the Properties dialog box, modify the requirement for content, click the update check the "new version", so that system will modify the contents of the current need to generate a new version.

3, Lock and Unlock:

Selected individual needs, in addition to modify the requirement for property other than the requirements can also lock and unlock operations, and to see who made a lock, and the lock date.

4, See History:

System provides the functions View the requirement to revise history, through which the function can know who made the final changes to the content of what specific changes, as well as the revision of history.

5, E-mail Notifications:

By configuring the C: \ Program Files \ Sevenuc \ ClearWorks \ clear.ini file email section of the

requirement can be set to update, lock, delete and other operations need to notify the relevant personnel, so that relevant personnel are kept informed of the requirement was renewed in order to react accordingly. Clear.ini the default sample configuration files are as follows:

[email]

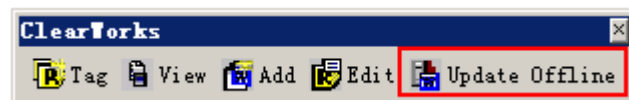
addr = henry@sevenuc.com

user = henry

password = 123456

6, Update Offline Modifications:

Requirements document can be edited offline, modify, after the completion of the editorial changes in the network server can ClearWorks the case, you can click on the toolbar of the



"Update offline " button will be modified in this block all the requirements for batch updates to the server database.

© 2008 Sevenuc Software Development Corporation

www.sevenuc.com